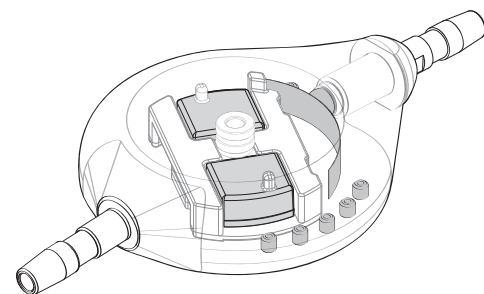


Polaris[®]

X-Ray Guide



1 LOCATE

The valve

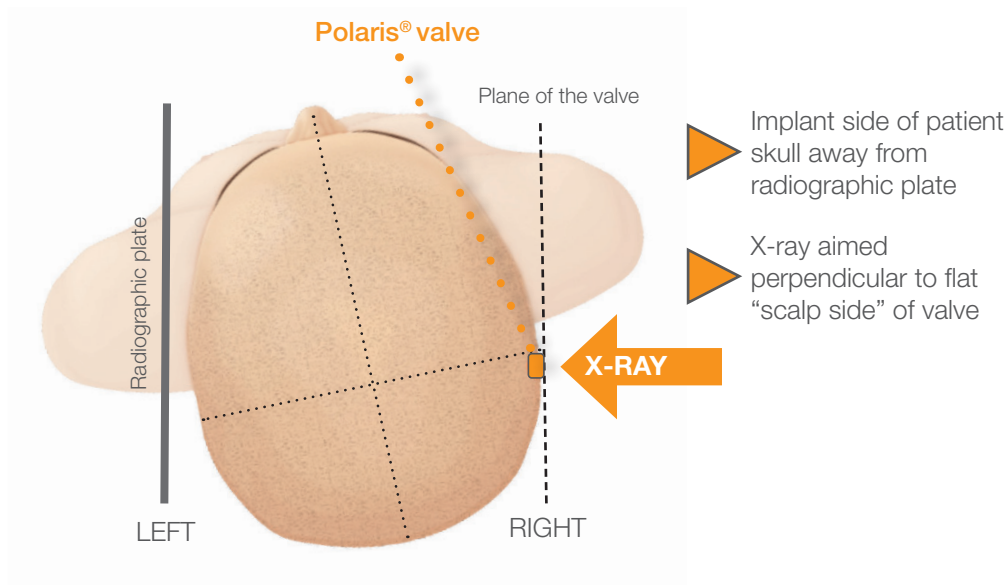
Ask patient to locate valve on skull

Or

Palpate for valve on skull, typically behind ear, frontal, or occipital

2 POSITION

The patient



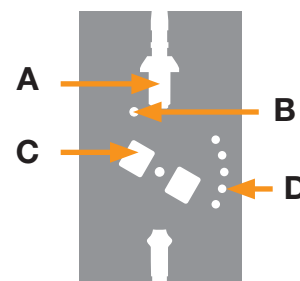
3 X-RAY

The valve

4 CHECK

The landmarks

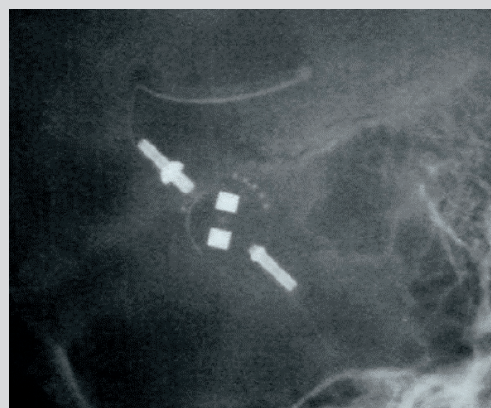
- A. Inlet Connector
- B. Pressure Range Indicators
- C. Micromagnets indicating rotor orientation
- D. Operating Pressure Indicators



Oblique X-ray - Difficult to read

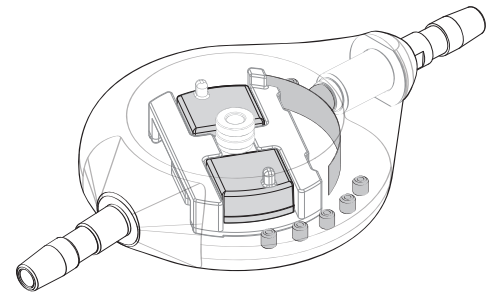


Perpendicular X-ray - Easy to read



Polaris[®]

X-Ray Guide



Check the valve model and read pressure setting:

		SPV-140 0 dot	SPV 1 dot	SPV-300 2 dots	SPV-400 3 dots
1 CHECK The model					
2 READ The pressure					
Position 1		10 mmH ₂ O	30 mmH₂O	50 mmH ₂ O	80 mmH ₂ O
Position 2		40 mmH ₂ O	70 mmH₂O	100 mmH ₂ O	150 mmH ₂ O
Position 3		80 mmH ₂ O	110 mmH₂O	150 mmH ₂ O	230 mmH ₂ O
Position 4		100 mmH ₂ O	150 mmH₂O	220 mmH ₂ O	330 mmH ₂ O
Position 5		140 mmH ₂ O	200 mmH₂O	300 mmH ₂ O	400 mmH ₂ O

IMAGE ORIENTATION



5 dots towards nose
RIGHT side implantation :
CORRECT image
LEFT side implantation :
 Image or valve
REVERSED



5 dots away from nose
RIGHT side implantation :
 Image or valve
REVERSED
LEFT side implantation :
CORRECT image

DIRECTION TO FLOW

